



# Equal Entry

Swedish Public Employment Service Project  
Co-funded by the European Social Fund

2018-2021



 ARBETSFÖRMEDLINGEN  
SWEDISH PUBLIC EMPLOYMENT SERVICE

# A labor market integration project – designed as a randomized controlled trial

- Co-funded by the European Social Fund (ESF)
- Project period: 2018-2021; Total budget: around 27 million Euro
- Data-driven governance in order to prioritize jobseekers far from the labor market
- Target group: Newly arrived immigrants with
  - Refugee background
  - No longer than four years residence permit
- Location: 16 offices, covering large parts of Sweden
- Scope: 3000 participants in active labor market policy interventions (50 per cent women)



# Background

Large differences in employment between native and foreign born women

Previous studies show that foreign-born women:

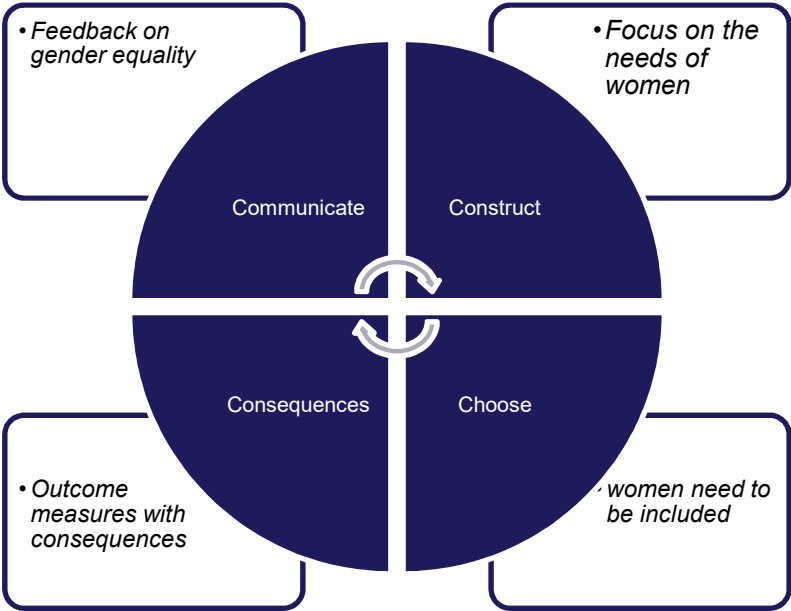
- Access the labor market to a lower extent than foreign-born men, despite similar prerequisites
- Get an inferior support – fewer meetings, less active labour market interventions

Research points to Job Search Assistance as an effective intervention

- Q: could it be targeted to job seekers far from the labor market?



# Program design: A model for gender equality and labor market intervention efficiency



# What are we doing and how?

- Systematic and guiding mapping of jobseeker *and* employer
- Emphasis on information sharing and guidance
- Reduces statistical discrimination and creates potential to match on soft skills
  
- Additional support for jobseekers who need it

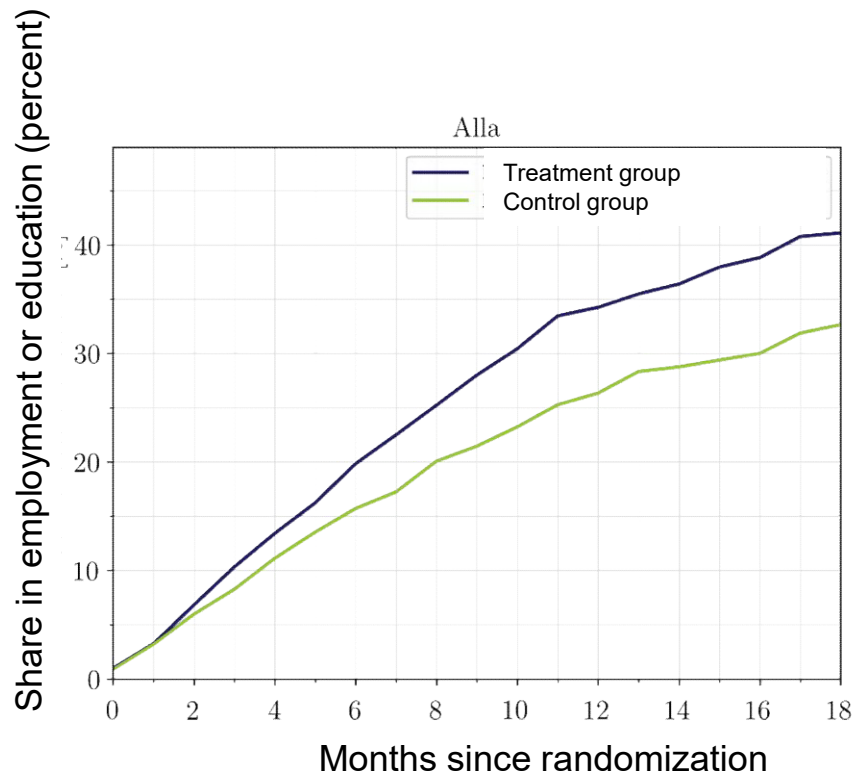


## Summary of results so far

- 3710 jobseekers have been offered support to enter the labor market
  - 93 percent accepts the offer – they want help to find work
  - The target group is heterogenous:
    - Half lacks secondary school education
    - Half are women
- 3088 jobseeker have participated in the systematic mapping so far
- Among those who participated at least three months ago:
  - 49 percent are employed
  - The result for women is at 46 percent

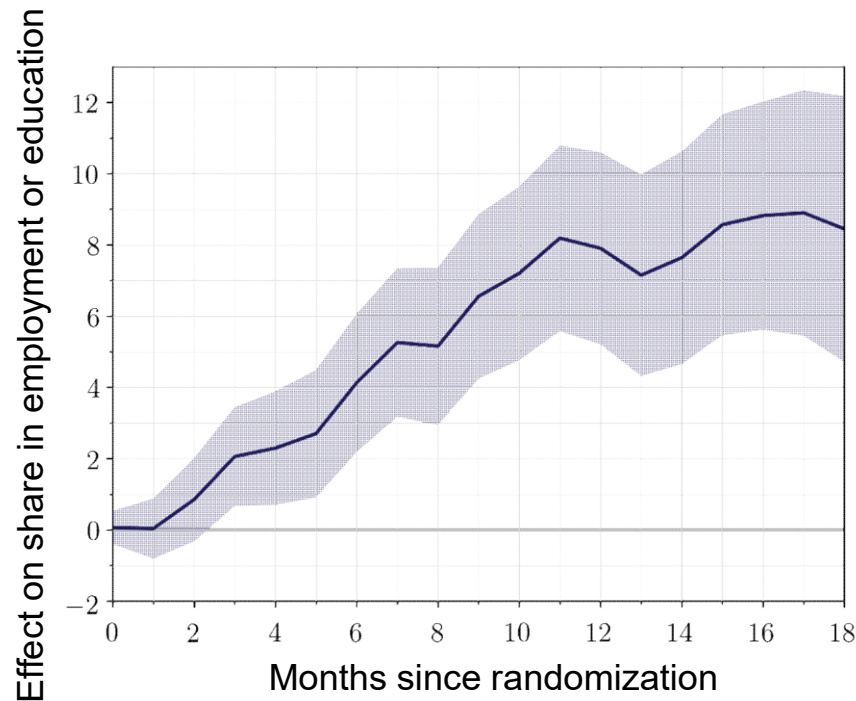


# Summary of results – from a research perspective



- Current follow-up period: 1,5 years
- Randomized controlled trial: Outcome differences = project contribution
- Outcome: Employment or regular education – capture using PES register data
- Want to estimate Intention To Treat effects

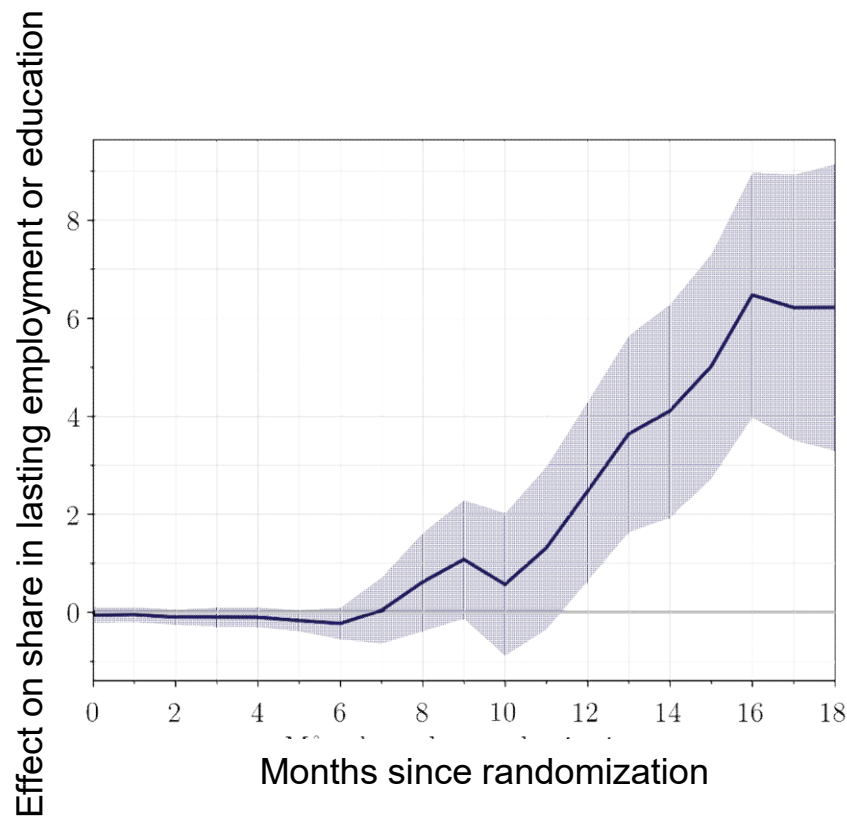
## Significant effects to low cost



- 1,5 years post randomization: 8 percentage point effect towards increased employment or education
- Costs about the same as existing JSA interventions targeted at jobseekers with better job chances



# Sustainable job placements



- 1,5 years post randomization: 6 percentage point effect towards increased **sustainable** employment





***To summarize: We enable unemployed  
newly arrived immigrants and employers to  
find each other***



 **ARBETSFÖRMEDLINGEN**  
SWEDISH PUBLIC EMPLOYMENT SERVICE

# Immigrant women are much needed at the labor market- let's make it happen!



# Thank you for listening!

Feel free to contact us if you have any further questions:

Josefine Palmqvist Schultz, project manager

Tel: +46 10-4865559

Mejl: [josefine.palmqvist-schultz@arbetsformedlingen.se](mailto:josefine.palmqvist-schultz@arbetsformedlingen.se)

Petra Ornstein, lead researcher

Tel: +46 10-4862808

Mejl: [petra.ornstein@arbetsformedlingen.se](mailto:petra.ornstein@arbetsformedlingen.se)

